

Men's Shed Values

On a day to day basis, the Shed Supervisor is ultimately responsible for the enforcement of policies and procedures and the conduct of members. As such, the Shed Supervisor has delegated authority to decide on matters for the day. Talk to the Shed Supervisor if you have something to clarify or report.

- The Shed operates for collective gain as a community resource and not for personal gain
- Equipment and materials of the Shed are property of the Shed and not to be loaned out
- Shed activities must be pre-approved by the Shed Supervisor, or the Shed Committee if necessary. Activities will be assessed under a range of criteria including benefit to the community
- Donations to the Shed can only be accepted by the Shed Supervisor, who will assess if it is in the Shed's interests

Shed Facilities

- The entire Waratah Community Reserve including the Shed and the site is a no smoking site
- Parking, Shed Kitchen and Shed Toilets are shared facilities. You are welcome to use all of the facilities, but are expected to do so while maintaining safety and cleanliness
- Failure to disregard Shed Rules, Policies and Procedures and Code of Conduct may result in exclusion from the Shed

The WMMMS supporters



Australian Government
Department of Health



The Hunter Multicultural Communities Inc. is supported financially by the Australian Government Department of Health and the NSW State Government and their entities. VIDA5895

Hunter Multicultural Communities (HMC) is a non-profit benevolent organisation providing health, welfare and cultural services, programs and support to the aged, disabled, youth and disenfranchised in the existing migrant, emerging refugee and broader communities of Newcastle and the Hunter Region.

Established in 1977 as the umbrella body for all ethnic communities in the Hunter Region, HMC has grown and diversified to become one of the foremost providers of health and wellness programs to the community, while maintaining and strengthening its original focus on the Region's ethnic membership and the wider multicultural community including the emerging refugee communities.

Currently more than 90 community groups, all of which are representative of established and emerging culturally and linguistically diverse (CALD) communities, receive the benefits of social and cultural support programs and guidance from HMC.

The Waratah-Mayfield Multicultural Men's Shed (WMMMS) was established in 2014 under the auspice of HMC, following major human resource and financial investment. The WMMMS is an integral part of HMC, and operates as a formal section of HMC complying with HMC's Constitution, its Code of Conduct and finance and governance rules and regulations and is under the day to day direction of HMC's Executive Officer who reports to HMC's Committee of Management.



Waratah-Mayfield Multicultural Men's Shed



www.huntermulticultural.org.au

Waratah-Mayfield Multicultural Men's Shed

Positioned adjacent to HMC's multicultural community centre on the Waratah Community Reserve, the purpose of the Waratah-Mayfield Multicultural Men's Shed (WMMMS) is to advance the health and well-being of shed members by providing a safe and happy environment where skilled and unskilled men can, in the company of other like-minded men:

- Pursue hobbies, pastimes and interests
- Learn new skills, practice and pass on old skills
- Learn about their own and other men's health and well-being
- By their efforts, contribute to their families, their friends, the Shed, and their wider community
- Mentor younger men and disenfranchised youth
- Provide a welcoming place for younger men with a disability



Safety a Priority

Safety is the major priority for the WMMMS, and we encourage all members to be familiar with the Shed's comprehensive Health and Safety Manual, and the safety sheets on each piece of equipment.

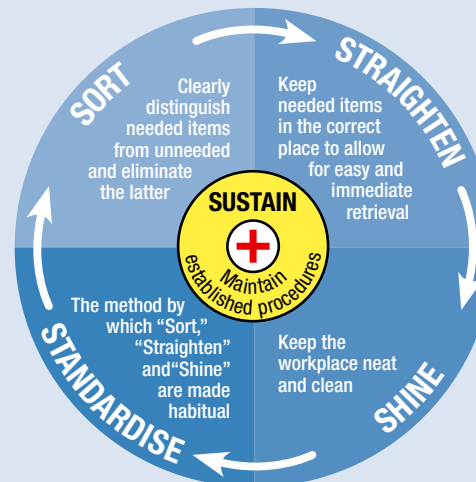
- Participants must be assessed as competent to use tools and equipment before use
- Be familiar with where the first aid equipment is kept, and Evacuation Procedures
- The Shed (facilities and work areas) must be kept in a clean and orderly condition at all times. It is the responsibility of all users to clean up after themselves. Assisting other members is also encouraged
- We use the "5S" principles for running the workshop, and maintaining our standard of cleanliness and order

Who Can Join?

Membership is open to individuals, agencies or organisations concerned with men's issues. Membership starts by completing a Shed Membership Form for nomination. This form must be lodged with the Shed Coordinator for processing and approval. If approval is granted, the nominee will be requested to pay a membership fee. An application form is available from the Shed Coordinator or HMC.

Membership benefits include:

- Access to machinery and equipment for use in the Shed (subject to competency assessment)
- Opportunities for training
- Covered under insurance
- WMMMS shirt
- Voting rights



What's Next?

Once you are a member we will introduce you to the facilities available at the Waratah Community Reserve on which the WMMMS stands including HMC Community Centre, the Shed and the Shed work spaces/equipment.

When your membership application has been processed and accepted, members will be presented with an information sheet to register personal details, medical conditions, and an assessment of skills/competencies. This will ensure your health and safety is properly considered when you are in the Shed.

You will also be given an information pack with full details of the Shed's policies and procedures, and the expectations of members.